

PROPERTY IN THE BOROUGH OF FAIR LAWN, BERGEN COUNTY, NEW JERSEY

Location Survey of Dwelling on Lot 8 in Block 4413 as shown on the current Tax Assessment Map of the Borough of Fair Lawn, County of Bergen, and State of New Jersey.

Certified to: JACOB TAYLOR, to be correct.

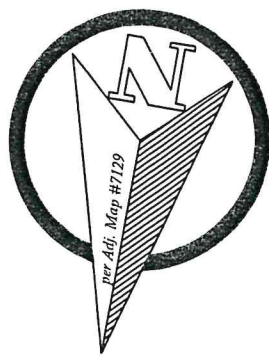
Scale: 1" = 20 feet



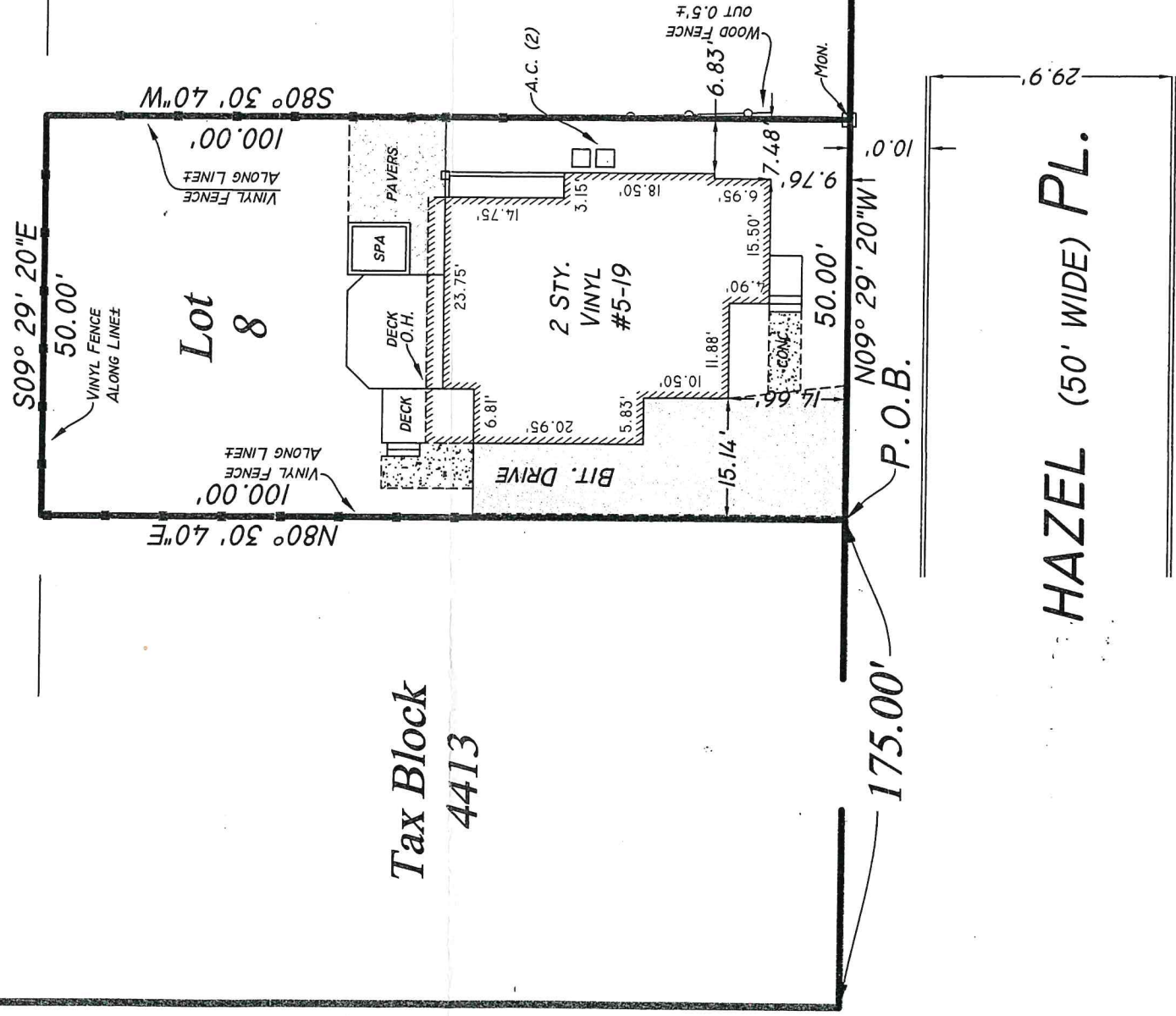
STEVEN L. KOESTNER
P.E. & L.S. NJ LIC. # 27901/ NY LIC. # 50865
KOESTNER ASSOCIATES
PROFESSIONAL ENGINEERS & LAND SURVEYORS
HACKENSACK, N.J. 07602
July 20, 2021

since 1916

A WRITTEN WAIVER AND DIRECTION NOT TO SET CORNER MARKERS HAS BEEN OBTAINED FROM THE ULTIMATE USER PURSUANT TO P.L. 2003, C.14(C45:8-36.3) AND N.J.A.C. 13:40+5.(d).



MORLOT AVE. (66' WIDE)



Tax Block 4413