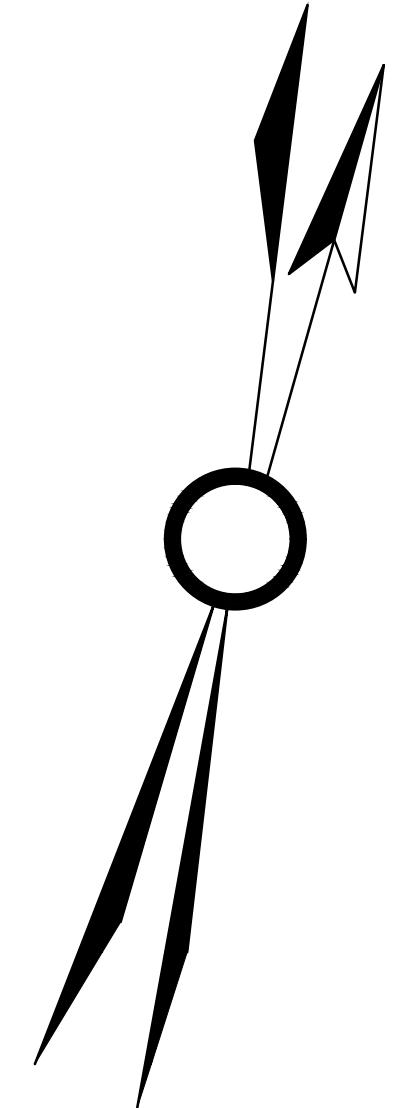
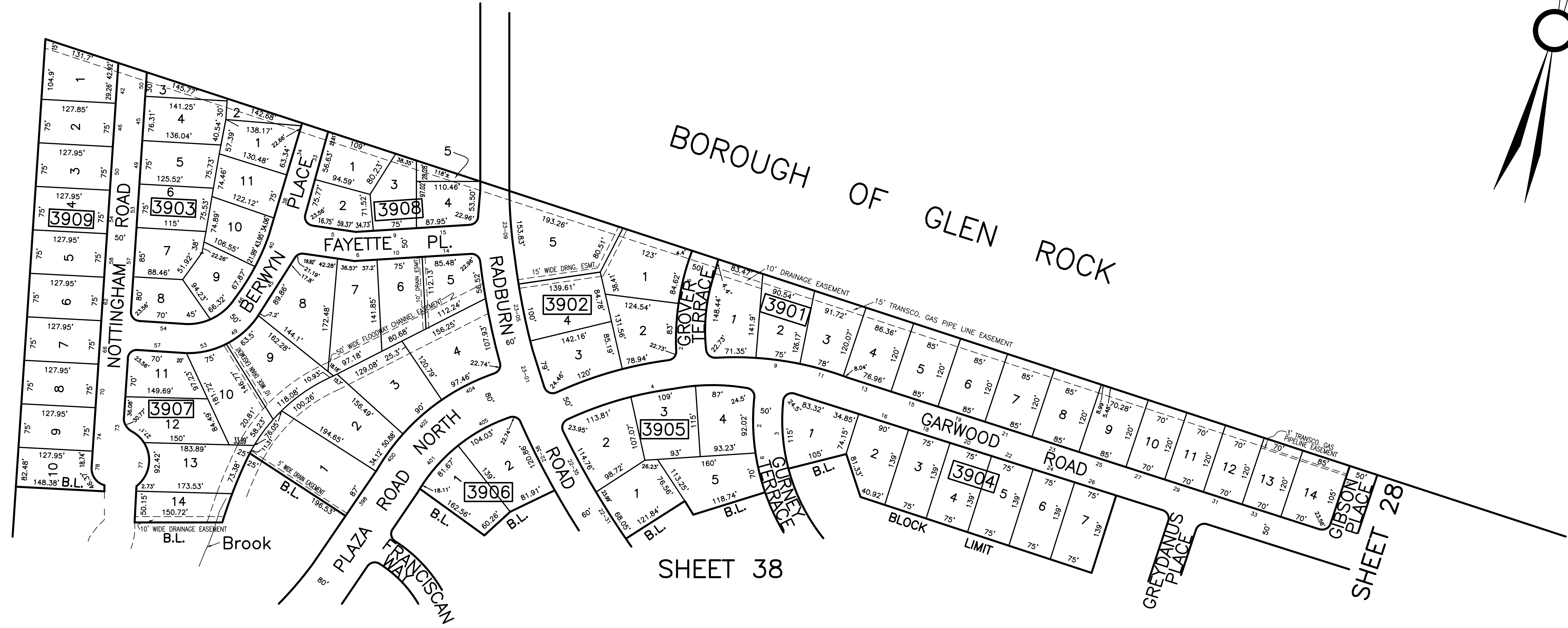


DATE	REVISIONS	NO.
9/20/05	BIRDSALL ENGINEERING, INC. WILLIAM SCHINDLER, JR., P.L.S.	GS27188
1/17/06	BIRDSALL ENGINEERING, INC. WILLIAM SCHINDLER, JR., P.L.S.	GS27188
1/31/08	BRUCE D. RIGG, P.E., P.L.S.	GB22720
6/1/10	BRUCE D. RIGG, P.E., P.L.S.	GB22720
1/1/14	BRUCE D. RIGG, P.E., P.L.S.	GB22720
12/16/16	BRUCE D. RIGG, P.E., P.L.S.	GB22720
12/2020	GARY A. VEENSTRA, P.L.S.	24GS0372100



SHEET 49



SHEET 38

SHEET 28

THIS SHEET HAS BEEN REDRAWN USING COMPUTER AIDED  
 DRAFTING/DESIGN BASED ON THE PREVIOUS TAX MAP  
 PREPARED BY FRANK E. PERUGGI, BOROUGH ENGINEER  
 DATED SEPTEMBER 1932 AND LAST REVISED BY BRUCE D. RIGG, P.E., P.L.S.  
 LIC. NO. 22720, DATED DECEMBER 1993.

**TAX MAP**  
**BOROUGH OF FAIR LAWN**  
 BERGEN COUNTY NEW JERSEY  
 SCALE: 1"=100' DECEMBER 2004  
**BIRDSALL ENGINEERING, INC.**  
 611 INDUSTRIAL WAY WEST, EATONTOWN, NEW JERSEY 07724  
 CERTIFICATE OF AUTHORIZATION NO. 24GA27989800  
**WILLIAM SCHINDLER JR., PROFESSIONAL**  
**LAND SURVEYOR, LIC. NO. GS27188**