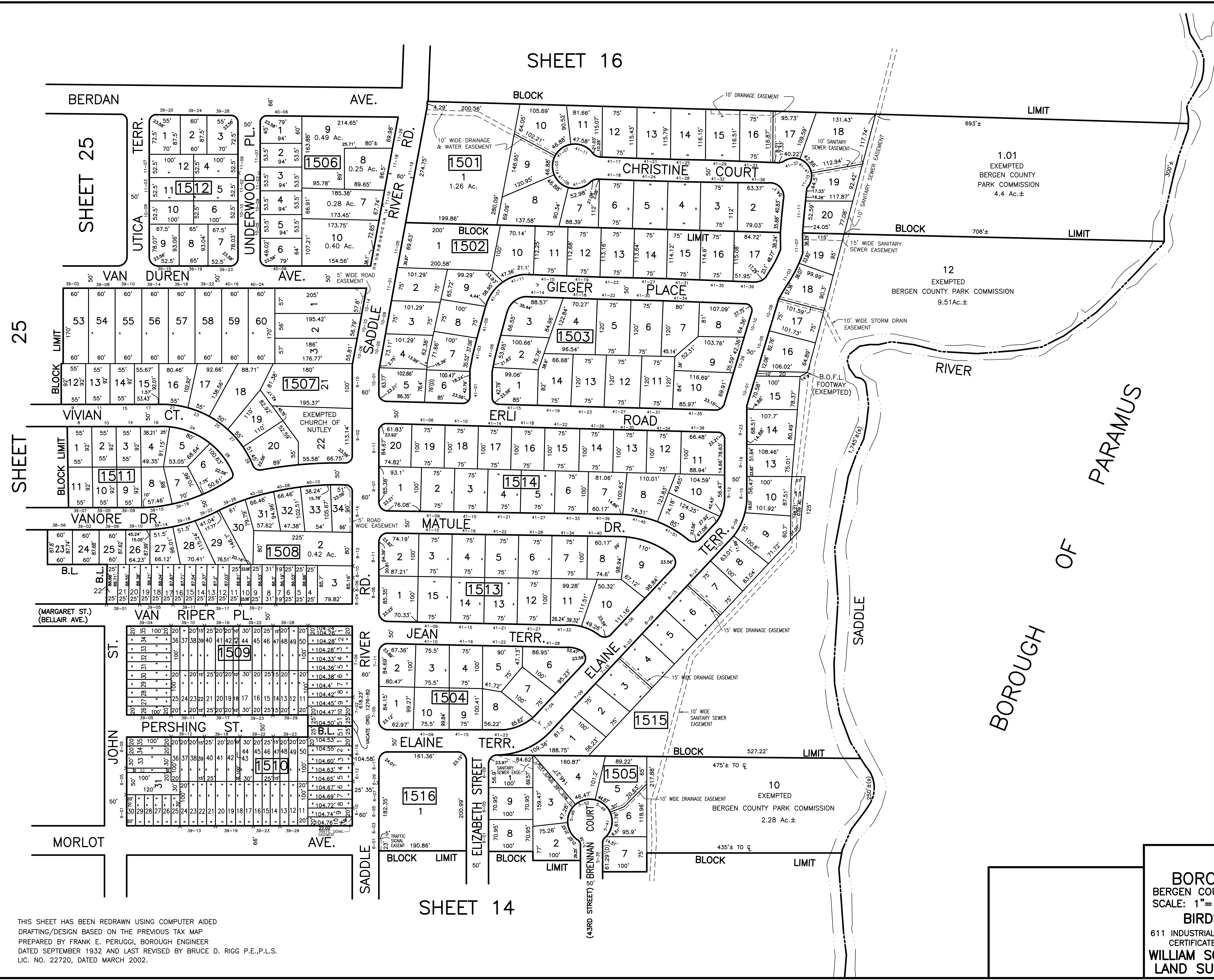


DATE	REVISIONS	NO.
9/20/05	BIRDSALL ENGINEERING, INC. WILLIAM SCHINDLER, JR., P.L.S.	GS27188
1/17/06	BIRDSALL ENGINEERING, INC. WILLIAM SCHINDLER, JR., P.L.S.	GS27188
1/31/08	BRUCE D. RIGG, P.E., P.L.S.	GB22720
6/1/10	BRUCE D. RIGG, P.E., P.L.S.	GB22720
1/1/14	BRUCE D. RIGG, P.E., P.L.S.	GB22720
12/16/16	BRUCE D. RIGG, P.E., P.L.S.	GB22720
12/2020	GARY A. VEENSTRA, P.L.S.	24GS0371300

SHEET 16



SHEET 14

THIS SHEET HAS BEEN REDRAWN USING COMPUTER AIDED DRAFTING/DESIGN BASED ON THE PREVIOUS TAX MAP PREPARED BY FRANK E. PERUGGI, BOROUGH ENGINEER DATED SEPTEMBER 1932 AND LAST REVISED BY BRUCE D. RIGG P.E., P.L.S. LIC. NO. 22720, DATED MARCH 2002.

TAX MAP
BOROUGH OF FAIR LAWN
 BERGEN COUNTY NEW JERSEY
 SCALE: 1"=100' DECEMBER 2004
BIRDSALL ENGINEERING, INC.
 611 INDUSTRIAL WAY WEST, EATONTOWN, NEW JERSEY 07724
 CERTIFICATE OF AUTHORIZATION NO. 24GA27989800
WILLIAM SCHINDLER JR., PROFESSIONAL
LAND SURVEYOR, LIC. NO. GS27188